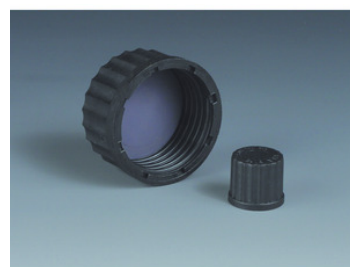


**Screw caps, High Temperature (HT), PPS****BOLA****Screw caps, High Temperature (HT), PPS**

With PTFE / silicone seal made of PPS (polyphenylene sulphide). With PTFE / silicone seals having a particularly high level of mechanical resistance, even in temperatures up to 250°C. The non-slip, knurled outer surface ensures the screw cap can be closed securely and opened easily. The closure incorporates a PTFE-faced silicone seal wad and the substance in the container only comes in contact with PTFE. The silicone wad levels out any unevenness in the container neck.



Code	Description	Packaging
LLG09209070	Screw caps, High Temperature (HT), PPS, For thread size 14 GL	1 pz.
LLG09209071	Screw caps, High Temperature (HT), PPS, For thread size 18 GL	1 pz.
LLG09209072	Screw caps, High Temperature (HT), PPS, For thread size 25 GL	1 pz.
LLG09209073	Screw caps, High Temperature (HT), PPS, For thread size 32 GL	1 pz.
LLG09209074	Screw caps, High Temperature (HT), PPS, For thread size 45 GL	1 pz.



**CARLO ERBA Reagents S.A.S.**  
 Chaussée du Vexin – 27106 Val  
 de Reuil cedex  
 N° TVA: FR 63391048824  
 Tél : +33 (0)2 32 09 20 00  
[www.carloerbareagents.com](http://www.carloerbareagents.com)



**CARLO ERBA**  
*Reagents operates with  
 a Certified Quality  
 Management System*

