

**Accessories for Incubator Shaker KS4000i control****IKA****Accessories for Incubator Shaker KS4000i control****AS 4000.1 Universal attachment**

For various types of vessels. Infinitely variable clamping rolls allow universal adaptation to various vessels.

Included with delivery: 1 x AS 1.400 Basic holder, 6 x AS 1.401 Clamping roll, 12 x AS 1.402

Fastening screw

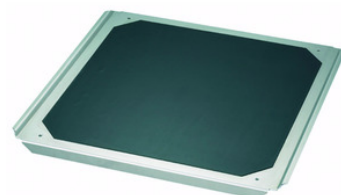
AS 4000.2 Fixing clip attachment

For shaking flasks, Erlenmeyer flasks and bottles with a round crosssection (without fixing clips).

Number of fixing clips (volume): 50 x AS 2.1(25ml), 48 x AS 2.2 (50ml), 25 x AS 2.3 (100ml), 16 x AS 2.4 (250ml), 12 x AS 2.5 (500ml), 7 x AS 2.6 (1000 ml)

AS 4000.3 Dish attachment

For smooth shaking operations in the low viscosity range, e.g. for cell cultures, nutrient media in Petri dishes, culture bottles and vessels with a low centre of gravity. With integrated slip-resistant foil (PP).



Code	Description	Packaging
LLG09837894	Accessories for Incubator Shaker KS4000i control, Type AS 4000.1, Universal attachment, dim. Set-up plate (W x D) 360 x 410 mm, Weight 3200 g	1 pz.
LLG09837892	Accessories for Incubator Shaker KS4000i control, Type AS 4000.3, Dish attachment, dim. Set-up plate (W x D) 430 x 430 mm, Weight 800 g	1 pz.
LLG09837893	Accessories for Incubator Shaker KS4000i control, Type AS 4000.2, Fixing clip attachment, dim. Set-up plate (W x D) 430 x 430 mm, Weight 2650 g	1 pz.
LLG06236293	Accessories for Incubator Shaker KS4000i control, Type STICKMAX, Adhesive mat, dim. Set-up plate (W x D) 200 x 200 mm, Weight g	1 pz.
LLG09837895	Accessories for Incubator Shaker KS4000i control, Type AS 1.400, Basic holder*, dim. Set-up plate (W x D) mm, Weight g	1 pz.
LLG09837896	Accessories for Incubator Shaker KS4000i control, Type AS 1.401, Clamping roll*, dim. Set-up plate (W x D) mm, Weight g	1 pz.
LLG09837897	Accessories for Incubator Shaker KS4000i control, Type AS 1.402, Fastening screw*, dim. Set-up plate (W x D) mm, Weight g	1 pz.



CARLO ERBA Reagents S.A.S.
 Chaussée du Vexin – 27106 Val
 de Reuil cedex
 N° TVA: FR 63391048824
 Tél : +33 (0)2 32 09 20 00
www.carloerbareagents.com



CARLO ERBA
*Reagents operates with
 a Certified Quality
 Management System*

