

LLG-uniTOPDISPENS 2
(Re-Circulation Valve)



Lab Logistics Group GmbH / Am Hambuch 1
D-53340 Meckenheim / www.llg-labware.de

Operation
Manual

Preface

Welcome to the "uniTOPDISPENS 2 User Manual". Users should read this manual carefully, follow the instructions and procedures, and beware of all the cautions when using this instrument.

Service

When help needed, you can always contact the service department of manufacturer for technical support in the following ways:

Lab Logistics Group GmbH

Am Hambuch 1

D-53340 Meckenheim

Telefon: +49 (0)2225 - 92 11-0

Telefax: +49 (0)2225 - 92 11-11

E-mail: info@llg.de

www.llg.de

Please provide the customer care representative with the following information:

- Serial number (on the rear panel)
- Certification
- Description of problem (i.e., hardware or software)
- Methods and procedures adopted to resolve the problems
- Your contact information

Warranty

This instrument is warranted to be free from defects in materials and workmanship under normal use and service, for a period of 36 months from the date of invoice. The warranty is extended only to the original purchaser. It shall not apply to any product or parts which have been damaged on account of improper installation, improper connections, misuse, accident or abnormal conditions of operation.

For claims under the warranty please contact your local supplier. You may also send the instrument directly to manufacturer, enclosing the invoice copy and by giving reasons for the claim.

TABLE OF CONTENTS

	Page No.
Intended Use Of The Instrument	1
Safety Instruction	1
Functions and Limitations of Use	2
Operating Exclusions	3
Storage Conditions	3
List of Recommended Reagents	3
First Steps	10
Assembly	10
Priming	11
Dispensing	12
Error Limits (Nominal Volume, Partial Volume)	13
User Calibration Procedure	14
Maintenance / Cleaning	15
Autoclaving	18
Re-Assembly	19
Troubleshooting	20

Intended Use Of The Instrument

The uniTOPDISPENS 2 is a general purpose laboratory instrument intended for use in laboratories for dispensing reagents and chemicals which are compatible with the instrument. (see page 4)

Safety Instructions

This instrument may sometimes be used with hazardous materials, operations and equipments. It is beyond the scope of this manual to address all of the potential risks associated with its use in such applications. It is the responsibility of the user of this instrument to consult and establish appropriate safety and health practice and determine the applicability of regulatory limitations prior to use.

⚠ Please read the following carefully!

- 1). Every user must read and understand this operating manual before operation.
- 2). Follow general instructions for hazard prevention and safety instructions e.g. wear protective clothing, eye protection and gloves.
- 3). Observe all specifications provided by reagent manufacturers.
- 4). When dispensing inflammable media, make sure to avoid the built up of static charge, e.g. do not dispense into plastic vessels do not wipe instruments with a dry cloth.
- 5). Use the instrument only for dispensing liquids, with strict regard to the defined limitations of use and operating limitations, (see page 2). If in doubt, contact the manufacturer or supplier.
- 6). Always use the instrument in such a way that neither the user nor any other person is endangered. When dispensing, the discharge tube must always point away from you or any other person. Avoid splashes. Only dispense into suitable vessels.
- 7). Never press down the piston when the discharge tube closure is attached.
- 8). Never remove the discharge tube while the dispensing cylinder is filled.
- 9). Reagents can accumulate in the cap of the discharge tube. Thus, it should be cleaned regularly.
- 10). Never carry the mounted instrument by the cylinder sleeve or the valve block. Breakage or loosening of the cylinder may also lead to personal injury from chemicals.
- 11). Never use force on the instrument. Use smooth gentle movements to operate the piston upwards and downwards. Use only original manufacturer's accessories and spare parts.
- 12). Do not attempt to make any technical alterations. Do not dismantle the instrument any further than is described in the operating manual.

- 13). Always check the instrument for visual damage before use.
- 14). If there is a sign of a potential malfunction (e.g. piston difficult to move, sticking valve or leakage), immediately stop dispensing. Consult the 'Troubleshooting' section of this manual and contact the manufacturer if needed, (see page 20).

Functions and Limitations of Use

The uniTOPDISPENS 2 is designed for dispensing liquids directly from the reservoir bottle. The instrument is calibrated according to the requirements of the DIN EN ISO 8655 - 5. When the instrument is correctly used, the dispensed liquid comes into contact with only the following chemically resistant materials: PTFE, FEP and Borosilicate glass.

Limitations of use :

This instrument is designed for dispensing liquids, with the following physical limits:
Use temperature from +15°C to +40°C (from 59°F to 104°F) of instrument and reagent
Vapor pressure up to max. 600 mbar. Aspirate slowly above 300 mbar, in order to prevent the liquid from boiling.

Kinematic viscosity 500 mm²

(dynamic viscosity [mPas] = kinematic viscosity [mm²/s] x density [g/cm³])

Density: up to 2.2 g/cm³

Operating Limitations :

Liquids, which form deposits may make the piston difficult to move or may cause jamming (e.g. crystallizing solutions or concentrated alkaline solutions). If the piston becomes difficult to move, the instrument should be cleaned immediately. (see page 15)

When dispensing inflammable media, make sure to avoid buildup of static charge, e.g. do not dispense into plastic vessels, do not wipe instrument with a dry cloth.

The Dispenser is designed for general laboratory applications and complies with the relevant standards, e.g. DIN EN ISO 8655. Compatibility of the instrument for a specific application (e.g. trace material analysis, food sector etc.) must be checked by the user. Certificates for specific applications, e.g. for production and administration of food, pharmaceuticals and cosmetics are not available.

Operating Exclusions

Never use with:

- Liquids attacking FEP, PFA and PTFE (e.g. dissolved sodium azide*)
- Liquids attacking borosilicate glass (e.g. hydrofluoric acid)
- Hydrochloric acid > 40 % and nitric acid >70 %; Tetrahydrofuran; Trifluoroacetic acid
- Explosive liquids (e.g. carbon disulfide)
- Suspensions (e.g. of charcoal) as solid particles may clog or damage the instrument

Liquids attacking PP (cap)

* Dissolved sodium azide permitted up to a concentration of max. 0.1 %.

Storage Conditions

Store the instrument and accessories only in clean conditions in a cool and dry place. Storage temperature: from - 20°C to +50°C (from - 4°F to 122°F)

Chemical Resistance

Chemicals from A to Z

The following list includes most frequently used chemicals. It provides useful information for the safe and adequate use of uniTOPDISPENS 2. However, safety precautions and recommendations in operating instructions must be followed carefully.

Code explanations

A = Good resistance B = Acceptable with limitations C = Not recommended

- 1 = Possible crystallisation - blockage or possible coating peeling
(do not let dry plunger and barrel together).
- 2 = Swell of plunger protection layer, possible peeling.
- 3 = Acid vapours (better resistance with lower concentration).
(do not leave instrument on bottle.)
- 4 = Risk of damage, softening or discoloration of external parts through vapours.
(do not leave instrument on bottle.)
- 5 = Chemical degradation of glass parts (plunger/barrel).

List of Reagents

Chemicals A - Z	
A	
Acetaldehyde (Ethanal)	A
Acetic acid 96%	A
Acetic acid 100% (glacial)	B/4
Acetic anhydride	B/4
Acetone (Propanone)	B/4
Acetonitrile (MECN)	B/4
Acetophenone	B/4
Acetyl Chloride	B/4
Acetylacetone	A
Acrylic acid	A
Acrylonitrile	B/4
Adipic acid	A
Allyl alcohol	A
Aluminum chloride	A
Amino acids	A
Ammonia 20%	B/4
Ammonia 20-30%	B/4
Ammonium chloride	A
Ammonium fluoride	A
Ammonium molybdate	A
Ammonium sulfate	A
Amyl alcohol (Pentanol)	A
Amyl chloride (Chloropentane)	B/4
Aniline	A
Ascorbic acid	A
n-Amyl acetate	B/4
B	
Barium chloride	A
Benzaldehyde	A
Benzene	B/4
Benzine	A
Benzoyl chloride	B/4
Benzyl alcohol	A
Benzyl chloride	B/4
Bis(2-ethylhexyl) phthalate	B/4
Boric acid 10%	A
Bromine	C/4
Bromobenzene	B/4
Bromonaphtalene	A
Butanediol	A
Butanol	A
Butanone (MEK)	B/4
Butyl acetate	B/4
Butyl methyl ether	B/4
Butylamine	B/4
Butyric acid	B/4

List of Reagents

Chemicals A - Z	
C	
Calcium carbonate	A
Calcium chloride	A
Calcium hydroxide	A
Calcium hypochlorite	A
Carbon disulfide	B/4
Carbon tetrachloride	B/4
Chlorine dioxide	B/4
Chlorine water	B/4
Chloro naphthalene	B/4
Chloroacetaldehyde 45%	A
Chloroacetic acid	A
Chloroacetone	B/4
Chlorobenzene	B/4
Chlorobutane	B/4
Chloroethanol	B/4
Chloroform	B/4
Nitro-hydrochloric acid (Aqua regia)	B/4
Chlorosulfonic acid	B/4
Chlorosulfuric acid 100%	B/3/4
Chromic acid 100%	B/3/4
Chromosulfuric acid 100%	C/3/4
Citric acid	A
Copper fluoride	A
Copper sulfate	A
Cresol	A
Cumene (Isopropylbenzene)	B/4
Cyanoacrylate	A
Cyclohexane	B/4
Cyclohexanone	B/4
Cyclopentane	B/4
D	
1,2-Diethylbenzene	B/4
1,4-Dioxane (Diethylene dioxide)	B/4
1-Decanol	A
Decane	A
Di-(2-ethylhexyl) peroxydicarbonate	B/4
Dibenzyl ether	B/4
Dichloroacetic acid	A
Dichlorobenzene	A
Dichloroethane	A
Dichloroethylene	B/4
Diesel oil (Heating oil)	A
Diethanolamine	A
Diethylamine	B/4
Diethylene glycol	A
Diethylether	B/4
Dimethyl sulfoxide (DMSO)	B/4
Dimethylaniline	A
Dimethylformamide (DMF)	B/4

List of Reagents

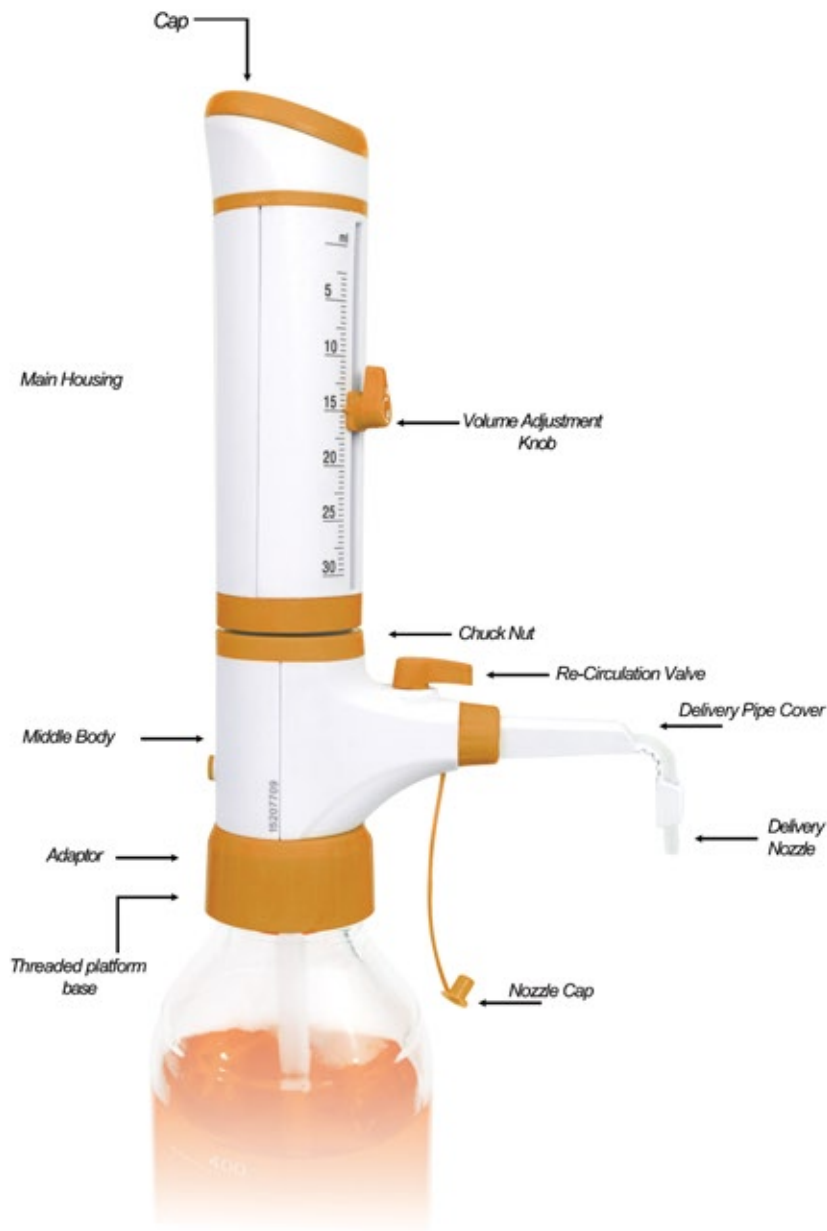
Chemicals A - Z	
E	
Ethanol	A
Ethanolamine	B/4
Ether	B/4
Ethyl acetate	B/4
Ethylbenzene	B/4
Ethylene chloride	B/4
Ethylene diamine	A
Ethylene glycol	A
F	
Fluoroacetic acid	B/4
Formaldehyde (Formalin)	A
Formamide	A
Formic acid	A
G	
Gamma-butyrolactone	A
Gasoline	B/4
Glycerin <40%	A
Glycolic acid 50%	A
H	
Heating oil (Diesel oil)	A
Heptane	A
Hexane	A
Hexanoic acid	A
Hexanol	A
Hydriodic acid	B/4
Hydrobromic acid	A
Hydrochloric acid 20% (HCl)	A
Hydrochloric acid 37% (HCl)	B/3
Hydrofluoric acid (HF)	C/5
Hydrogen peroxide	A
I	
Iodine	A
Iodine bromide	C/4
Iodine chloride	C/4
Isoamyl alcohol	A
Isobutanol	A
Isooctane	A
Isopropanol	A
Isopropyl ether	B/4
Iso-propylamine	B/4
L	
Lactic acid	A
M	
2-Methoxyethanol	A
Methanol	A
Methoxybenzene (Anisol)	B/4
Methyl benzoate	B/4
Methyl chloride (Chloromethane)	B/4
Methyl formate	A

List of Reagents

Methyl iodide (Iodomethane)	B/4
Chemicals A - Z	
M	
Methyl methacrylate (MMA)	B/4
Methyl propyl ketone (2-Pentanone)	A
Methyl tert-butyl ether	B/4
Methylene chloride (Dichloromethane) (DCM)	B/4
Methylpentanone	A
Mineral oil (engine oil)	A
Monochloroacetic acid	A
N	
N-Butylamine	B/4
Nitric acid 100%	C/4
Nitric acid 30-70%	B/4
Nitric acid dil. <30%	B/4
Nitrobenzene	B/4
Nitromethane	B/4
N-methyl-2-pyrrolidone (NMP)	A
O	
Octane	A
Octanol	A
Oil (vegetable, animal)	B/4
Oil of turpentine	B/4
Oleic acid	A
Oxalic acid	A
P	
Pentane	B/4
Peracetic acid	A
Perchloric acid 100%	B/4
Perchloric acid diluted	A
Perchloroethylene	B/4
Petroleum	B/4
Petroleum ether / spirit	B/4
Phenol	A
Phenylethanol	B/4
Phenylhydrazine	B/4
Phosphoric acid 100%	A
Phosphoric acid 85%	A
Piperidine	B/4
Potassium chloride	A
Potassium dichromate	A
Potassium hydroxide	A
Potassium iodide	A
Potassium permanganate	A
Potassium peroxydisulfate (persulfate)	A
Potassium sulfate	A
Propionic acid (Propanoic acid)	A
Propylene glycol (Propane-1,2-diol)	A
Propylene oxide	A
Pyric acid (Trinitrophenol)	B/4
Pyridine	B/4

List of Reagents

Chemicals A - Z	
P	
Pyruvic acid	A
R	
Resorcin	A
S	
Salicylaldehyde	A
Scintillation fluid	A
Silver acetate	A
Silver nitrate	A
Sodium acetate	A
Sodium chloride (kitchen salt)	A
Sodium dichromate	A
Sodium fluoride	A
Sodium hydroxide 30%	A
Sodium hypochlorite	A
Sodium thiosulfate	A
Sulfonitic acid 100%	B/4
Sulfur dioxide	B/4
Sulfuric acid 100%	B/4
T	
1,1,2-Trichlorotrifluoroethane	B/4
Tartaric acid	A
Tetrachlorethylene	B/4
Tetrahydrofuran (THF)	B/4
Tetramethylammonium hydroxide	A
Toluene	B/4
Trichlorethylene	B/4
Trichloroacetic acid	B/4
Trichlorobenzene	B/4
Trichloroethane	B/4
Trichloromethane (Chloroform)	B/4
Triethanolamine	A
Triethylene glycol	A
Trifluoroacetic anhydride (TFAA)	B/4
Trifluoromethane (Fluoroform)	B/4
U	
Urea	A
X	
Xylene	B/4
Z	
Zinc chloride 10%	A
Zinc sulfate 10%	A



First Steps

Confirm that package includes :

Bottle Top Dispenser, discharge tube, telescoping filling tube, calibration tool, different bottle adapters, a calibration certificate and this operation manual.

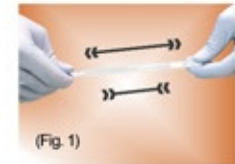
All dispensers will have the following adapters : 28, 32, 36, 40 & 45 mm.

Assembly

⚠ Wear protective clothing, eye protection and gloves. Follow all Safety instruction and observe limitations of use and operating limitations. (see page 2)

1. Adjust length of telescoping inlet tube.

The length of FEP inlet tubing provided should be adjusted to fit your particular reservoir. Longer length of inlet tube are available on request. (Fig. 1)



2. Fix the telescoping tube. (Fig. 2)



3. Choose the correct adapter for the bottle.

The threaded platform base of dispenser has a 30 mm screw thread. Five adapters are supplied to suit containers with a 28, 32, 36, 40, 45 mm and 30 mm (inbuilt adapter) screw neck. (Fig. 3)



4. Fix the adapter. (Fig. 4)



5. Mount the dispenser :

The assembled dispenser is screwed to the reservoir using gentle hand torque applied to the threaded platform base only. Removal should also be by means of hand torque applied to the same base. (Fig. 5)



6. Ready to Use.

Do not operate the piston until the unit is safely and fully mounted on the reservoir bottle.

⚠ Always wear protective gloves when touching the instrument or the bottle, especially when using dangerous liquids. When mounted to a reagent bottle, always carry the instrument as shown in the figure (5).

⚠ Never press down the piston when the cap is on. Avoid splashing the reagent. The reagent can drip out from the discharge tube and cap. (Fig. 6)

Priming

Open the cap of the dispensing tube (Fig. 6). For safety hold the discharge tube orifice on the inner wall of a suitable receiving vessel.

1. Set valve to 'Recirculate' (Fig. 7)

For priming gently pull up the piston approx. 30mm and push it down rapidly until the lower stop. Repeat this procedure 5 times (Fig. 8).



2. Turn valve to 'Dispense' (Fig.9).

To avoid splashes when priming hold the discharge tube on the inner wall of a suitable receiving vessel and dispense liquid to prime the discharge tube until it is bubble free, Wipe away any remaining drops from the discharge tube.



Note :

Before using the instrument for the first time, ensure it is rinsed carefully and discard the first few samples dispensed. Avoid splashing.



Dispensing

1. Volume Setting :

Volume Adjustment Knob :

It is simple and easy to operate. There are two positions of the knob as shown in Fig. 10-A

Position 1 : Locked Position | Position 2 : Unlocked Position

Setting the Volume :

Follow these simple steps :

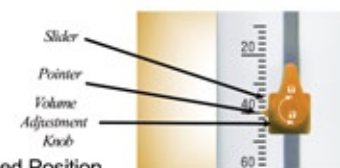
Turn the Knob from Position 1 to Position 2 by rotating it

ANTICLOCKWISE as shown in Fig. 10-B1.

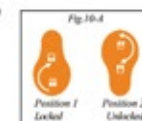
The slider is now loose and can be moved up and down.

Set your desired volume by aligning the pointer with the scale.

To lock the set volume, turn the Knob from Position 2 to Position 1 by rotating it CLOCKWISE as shown in Fig. 10-B2 .



(Fig. 10)



2. Dispensing :

Remove cap from the discharge tube. (Fig. 11)



When using the instrument (with recirculation valve) turn the valve to Dispensing. (Fig. 12)



Hold the discharge tube orifice on the inner wall of a suitable receiving vessel. (Fig. 13)



Gently lift the piston until the upper stop and then depress piston slowly and steadily with minimal force until the lower stop. (Fig. 14)



Wipe off the discharge tube against the inner wall of the receiving vessel.



Reattach cap to discharge tube. (Fig. 15)

Error Limits

Error Limits related to the nominal capacity (= maximum volume) indicated on the instrument, are obtained when instrument and distilled water are equilibrated at ambient temperature (20°C/68°F). Testing takes place according to DIN EN ISO 8655-6 with a completely assembled instrument and with uniform and smooth dispensing.

Error Limits		Specifications ISO 8655			
Vol. Range	Increment	Accuracy		CV	
		±%	± ml	±%	± ml
0.25-2.5 ml	0.05 ml	0.6	0.015	0.2	0.005
0.5-5 ml	0.1 ml	0.6	0.030	0.2	0.010
1-10 ml	0.2 ml	0.6	0.060	0.2	0.020
2.5-30 ml	0.5 ml	0.6	0.180	0.2	0.060
5-60 ml	1.0 ml	0.6	0.360	0.2	0.120
10-100 ml	2.0 ml	0.6	0.600	0.2	0.200

User Calibration Procedure

Dispenser has been laboratory calibrated at its nominal volume. However, due to changes in environmental conditions and the viscosity of the media which you dispense, we recommend gravimetric testing every 3 months. Gravimetric volume testing according to DIN EN ISO 8655-6 (for measurement conditions, see 'Error Limits', page 13) is performed as follows:

Re-Calibrate :

1. Set the Dispenser to the nominal volume or any other volume which is most commonly used by you. (Fig. 16)
Follow the common rules for calibration used in statistical quality control (ISO 8655/2). Set the volume and dispense five full volumes of distilled water at 20°C on Electronic Balance to establish the actual mean volume of liquid dispensed. If the gravitational average result varies from the volume displayed, you should re-calibrate the Dispenser.



2. For re-calibration pull the cap outwards to expose the Calibration nut. (Fig. 17)



3. Using the calibration tool, turn the calibration nut clockwise to reduce the volume and anticlockwise to increase the volume. Repeat this procedure till the desired volume is achieved on the electronic balance. (Fig. 18)



Maintenance / Cleaning

The Dispenser should be cleaned in the following situations :

- Immediately when the piston is difficult to move.
- Before changing the reagent.
- Prior to long term storage.
- Prior to dismantling the instrument.
- Prior to autoclaving.
- Prior to changing the valve.
- Regularly when using liquids which form deposits (e.g. crystallizing liquids).
- Regularly when liquids accumulate in the cap.

⚠ All maintenance should be carried out wearing suitable eye protection and protective clothing. If in doubt, consult your safety officer.

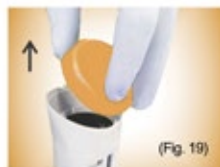
1. Make sure that the Dispenser is completely empty.
2. Place the instrument into an empty sink together with its reservoir.
3. Unscrew the threaded platform base from the reservoir and lift the dispenser's intake tube carefully out of the reservoir, whilst tapping it against the reservoir's aperture to shake off any droplets from the intake tube.
4. Hold the dispense nozzle over the aperture of the reservoir and apply gentle piston strokes in order to return any contents into the reservoir.
5. Empty the instrument completely and flush thoroughly with distilled water.
6. If the piston barrel is still not completely clean, you need to disassemble the dispenser. Refer Disassembling procedure given below.

Dis-assembling the dispenser for cleaning and servicing :

1. Procedure to disassemble the piston:

Pull the cap outwards to expose the Calibration Nut.

(Fig. 19)



- Unscrew the Calibration Nut with the help of calibration tool to disassemble the Piston and shaft out of the main housing. (Fig. 20)



- After unscrewing pull out the shaft. (Fig. 21)



- Rinse the piston and shaft with deionized water. (Fig. 22)



- Clean the cylinder with a bottle-brush. If necessary carefully remove deposits at the edge of the glass cylinder. (Fig. 23)



- Then flush all the parts of the instrument with deionized water. (Fig. 24)



- Insert the piston completely into the cylinder and then reassemble the instrument using the calibration tool by screwing back the piston. (Fig. 25)



Snap back the cap to complete the assembly. (Fig. 26)



2. Procedure to dis-assemble the DELIVERY PIPE

Unscrew the chuck nut and pull out the delivery pipe.
(Fig. 27) & (Fig. 28)



Clean the delivery pipe with deionized water.



3. Procedure to re-assemble the DELIVERY PIPE

First push the delivery pipe into the lower housing till it stops going in further. (Fig. 29)



Screw the chuck nut to complete the assembly. (Fig. 30)



Autoclaving

This instrument is autoclavable at 121° C (250° F) 1 bar absolute (15 psi) with a holding time of at least **15 minutes**.

⚠ Note :

Only the piston needs to be removed for autoclaving the instrument.

Dis-assembling for Autoclaving :

Pull the cap outwards to expose the Calibration Nut.
(Fig. 31)



Unscrew the Calibration Nut with the help of calibration tool to dis-assemble the Piston and shaft out of the main housing. (Fig. 32)



After unscrewing pull out the shaft. (Fig. 33)



This is the piston-shaft sub-assembly. (Fig. 34)



Autoclave the two sub-assemblies at 121°C and 15 psi pressure for 10-15 mins. (Fig. 35)



(Fig. 35)

Re-assembling after Autoclaving :

Insert the piston completely into the cylinder and then reassemble the instrument using the calibration tool by screwing back the piston. (Fig. 36)



(Fig. 36)

Snap back the cap to complete the assembly. (Fig. 37)



(Fig. 37)

Dispenser is now ready for use.
No Re-calibration is required after autoclaving.
However, a quick calibration check is recommended. (Fig. 38)



(Fig. 38)

Troubleshooting

Trouble	Possible Cause	Solution
Piston Difficult to move	Formation of crystals, dirty	Stop dispensing immediately. Loosen piston with circular motion, but do not disassemble. Follow all cleaning instructions. (see page 15)
Air bubbles appear in the Instrument	Reagent with high vapor pressure has been drawn in too quickly	Slowly draw in reagent.
	The instrument has not been primed	Prime the instrument, (see page 11).
	Filling tube is loose or damaged	Push the filling tube on firmly. if necessary cut off approx. 1 cm of the tube at the upper end and then re-connect it or replace filling tube.
	Liquid reservoir is empty	Refill reservoir and prime unit.
	Too fast filling action	Fill and dispense slowly.
	Leaking Piston	Clean Piston, (see page 15). If problem persists replace piston.
	Leaking discharge valve	Clean by flushing thoroughly with distilled water. (see page 15)
Dispensing not possible	Blocked Dispense nozzle	Disassemble the dispense nozzle and flush through with distilled water.
	Discharge valve stuck	Clean Unit by immersing valve assembly in distilled water. (see page 15)
Wrong Dispenser Volume	Instrument not calibrated	Follow steps of user calibration. (see page 14)
Barrel does not fill with liquid	Inlet tube not fitted firmly	Connect inlet tube correctly. (see page 10, Fig. 2)
Filling Not Possible	Volume adjustment to Minimum setting	Set to required volume. (see page 12)